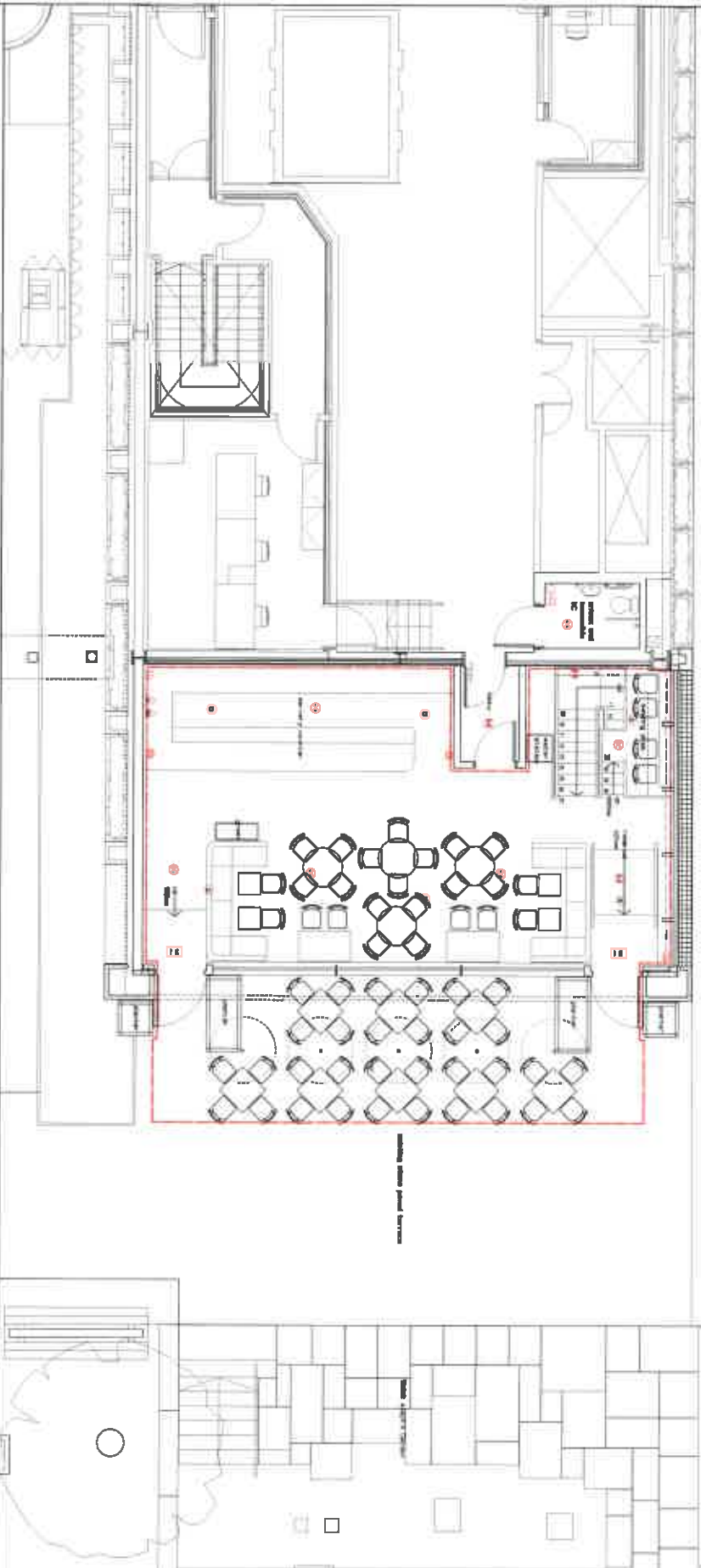


GROUND FLOOR PLAN



BASEMENT FLOOR PLAN



PIPE SCHEDULE KEY

- 1. 1/2" Cold Water
- 2. 1/2" Hot Water
- 3. 1/2" Gas
- 4. 1/2" Sewer
- 5. 1/2" Storm
- 6. 1/2" Vent
- 7. 1/2" Drain
- 8. 1/2" Exhaust
- 9. 1/2" Condensate
- 10. 1/2" Return Air
- 11. 1/2" Supply Air
- 12. 1/2" Chilled Water
- 13. 1/2" Heating Water
- 14. 1/2" Cooling Water
- 15. 1/2" Condensate
- 16. 1/2" Return Air
- 17. 1/2" Supply Air
- 18. 1/2" Chilled Water
- 19. 1/2" Heating Water
- 20. 1/2" Cooling Water

Notes

1. All work to be in accordance with the contract documents.
2. All work to be in accordance with the contract documents.
3. All work to be in accordance with the contract documents.
4. All work to be in accordance with the contract documents.
5. All work to be in accordance with the contract documents.
6. All work to be in accordance with the contract documents.
7. All work to be in accordance with the contract documents.
8. All work to be in accordance with the contract documents.
9. All work to be in accordance with the contract documents.
10. All work to be in accordance with the contract documents.
11. All work to be in accordance with the contract documents.
12. All work to be in accordance with the contract documents.
13. All work to be in accordance with the contract documents.
14. All work to be in accordance with the contract documents.
15. All work to be in accordance with the contract documents.
16. All work to be in accordance with the contract documents.
17. All work to be in accordance with the contract documents.
18. All work to be in accordance with the contract documents.
19. All work to be in accordance with the contract documents.
20. All work to be in accordance with the contract documents.

Project Information

Client: [Name]

Address: [Address]

City: [City]

State: [State]

Zip: [Zip]

Contract No.: [Contract No.]

Project No.: [Project No.]

Revision: [Revision]

Date: [Date]

Scale: [Scale]

Author: [Author]

Checker: [Checker]

Designer: [Designer]

Engineer: [Engineer]

Professional Seal: [Seal]